

**CERTIFIED LAND CORNER RECORDATION**

DESCRIPTION OF CORNER EVIDENCE FOUND, AND ORIGINAL RECORD (If known)

LOCATION

Found a 5/8" dia. x 24" long iron bar and rock mound. (Origin unknown)  
 G.L.O. record - Granite Boulder, 18 x 12 x 7 [John B. Thomas, 1872]

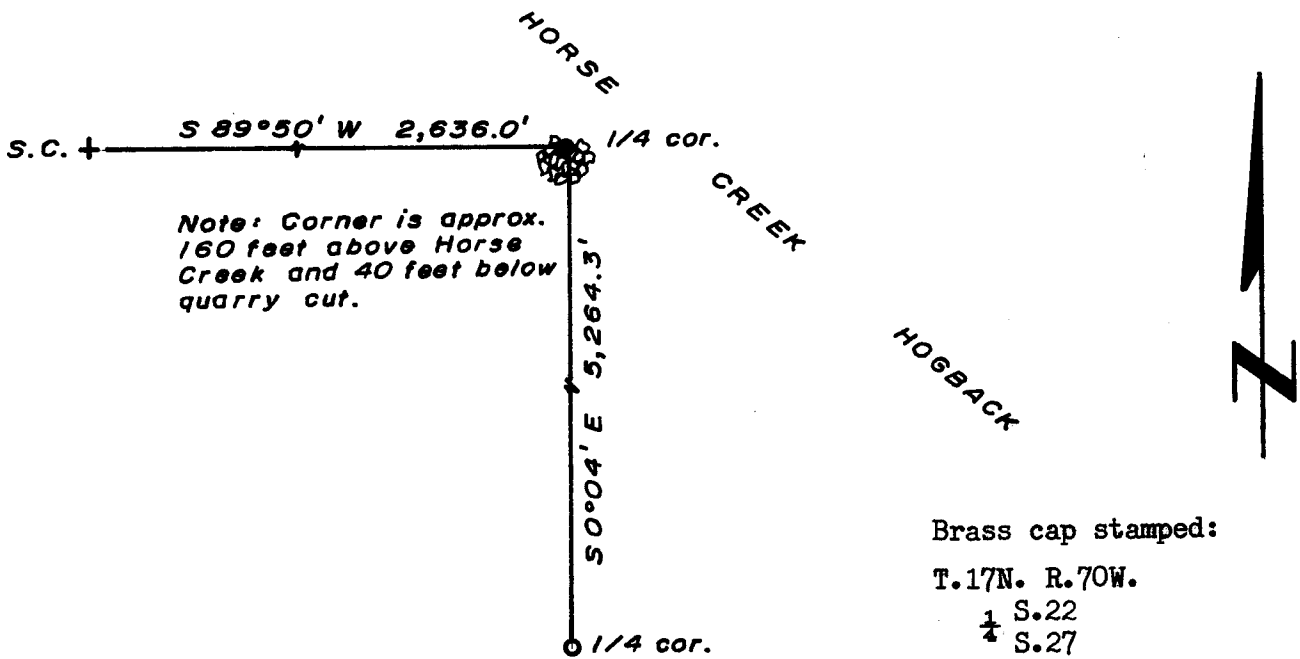
1/4 S.22  
 1/4 S.27

T.17N., R.70W.  
 6th P.M.

DESCRIPTION OF MONUMENT AND ACCESSORIES ESTABLISHED  
 TO PERPETUATE THE ORIGINAL LOCATION OF THIS CORNER:

At the corner: Set a 1 1/2" dia. x 30" long iron pipe with brass cap.  
 Accessories: Raised a rock mound (of limestone) around corner monument.  
 Left iron bar as memorial.

SKETCH, WITH COURSE AND DISTANCE TO ADJACENT CORNER IF DETERMINED IN THIS SURVEY.  
 (May Sketch or Paste Reproduction on Reverse Side.)



Brass cap stamped:  
 T.17N. R.70W.  
 1/4 S.22  
 1/4 S.27  
 LS 519 1975

I, R.L. Hudson certify that I have carefully performed or reviewed the work done on the diagrammed corner as reported on this recordation form and approve the same.

R.L. Hudson Wyoming L.S. No. 519  
 Signature of Surveyor Registration No.

STATE OF WYOMING,  
 Office of Clerk and Recorder,  
 County of Sarasie

This "corner record" was filed for record on the 20 day of August, 1975, was noted on the cross-index plat and is assigned page No. \_\_\_\_\_, in book No. \_\_\_\_\_.

Janet C. Whitehead  
 County Official 75

Cross Index No. <u>R-15</u>	T. <u>17</u>	R. <u>70</u>	Mer.
_____	T. _____	R. _____	Mer.
_____	T. _____	R. _____	Mer.
_____	T. _____	R. _____	Mer.
_____	T. _____	R. _____	Mer.
_____	T. _____	R. _____	Mer.
_____	T. _____	R. _____	Mer.

The State of Wyoming }  
County of Laramie } ss

This instrument was filed for record  
at 2:10 o'clock P. M. on the  
28 day of August  
A. D. 19 75 and duly recorded in  
book \_\_\_\_\_ on page \_\_\_\_\_

*James C. Mitchell*

County Clerk & Ex-Officio Register of Deeds  
By \_\_\_\_\_ Deputy